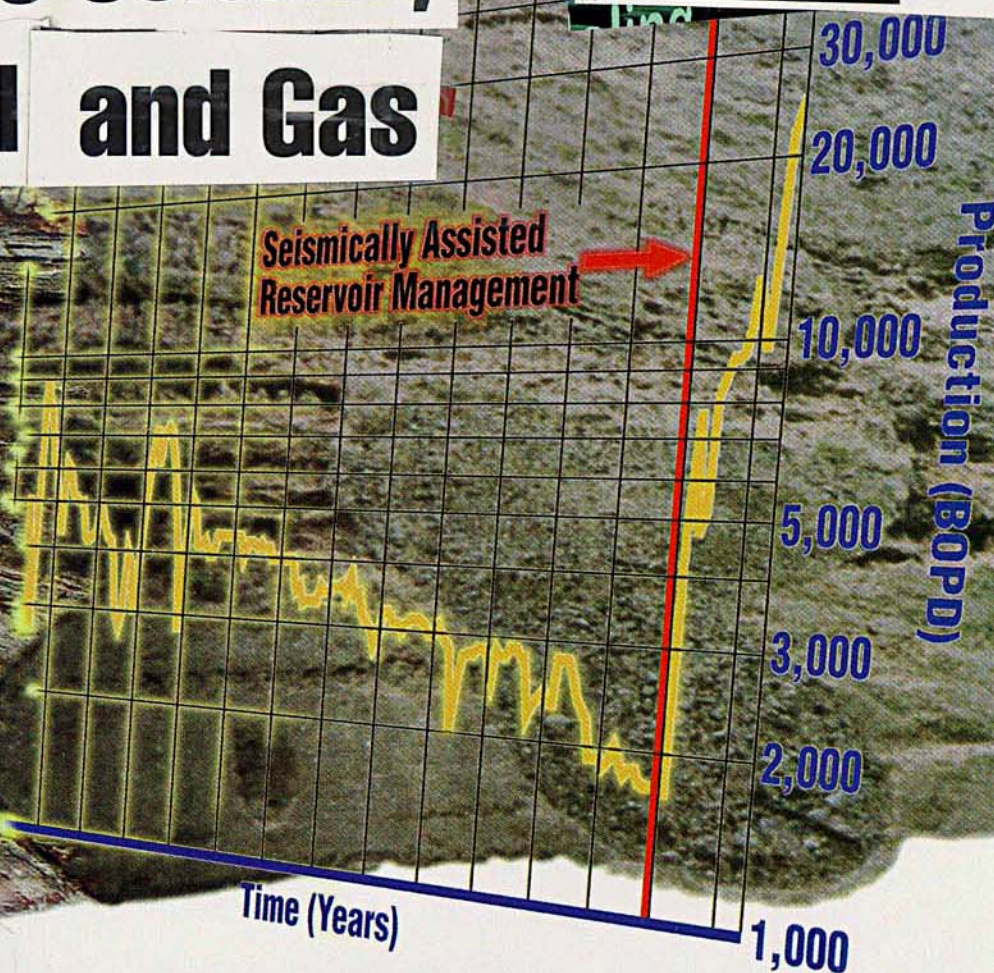


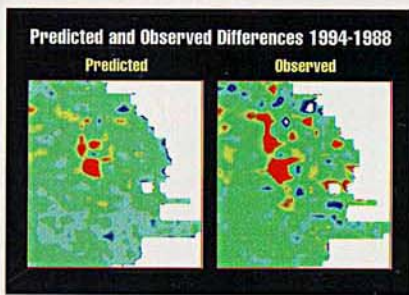
# Add 4-D/4-C Seismic, Multiply Oil and Gas

**SMART  
SEISMIC  
2-D 3-D 4-D**



For the cost-effective acquisition of targeted surveys, Western Geophysical has launched the industry's first purpose-built ocean-bottom cable (OBC) survey fleet with 4-component (4-C) surveying capability. In addition to these advanced acquisition technologies, Western uses the industry-leading Lamont 4-D™ software under license from Columbia University and software tools from EnTec Energy Consultants, Ltd. for rapid and effective data analysis.

For a feasibility study to determine whether 4-D seismic could work in your field, call the Western Geophysical Exploration and Reservoir Information Services (ERIS) group at 713-689-6106 or e-mail [eris@waii.com](mailto:eris@waii.com).



*Improve reservoir management with quantitative seismic history matching.*



## Western Geophysical

**Houston** 10001 Richmond Avenue, Texas 77042-4299  
Tel 713-789-9600 Fax 713-789-0172  
**Denver** 303-629-9250 **London** 44-181-560-3160  
**Perth** 61-8-9268-2682 **Buenos Aires** 54-1-383-1106  
**Bogota** 57-1-413-1799 **Caracas** 58-2-952-7210  
**Singapore** 65-545-3855 **Lagos** 234-1-269-3254  
**Web Site** [www.waii.com](http://www.waii.com)

Circle 108 on Reader Service

# Lamont 4-D Software for Enhanced Recovery

The industry's first 4-D software for increasing reservoir yields is now available from Western Geophysical as part of a service package or as a licensed software product. Developed by scientists at Columbia University's Lamont-Doherty Earth Observatory, the Lamont 4-D software allows you to evaluate the history of fluid movement in the reservoir, predict future movement, and calculate hydrocarbon volumes.

Two software products – Rapid Analysis and Inversion – provide the tools for interpreting multiple 3-D data sets, including legacy data, to describe time-lapse seismic differences and their relation to changes in the reservoir. The Lamont 4-D software has been proven in actual field studies and is currently being used to monitor fluid movement in almost half of the 4-D projects worldwide.

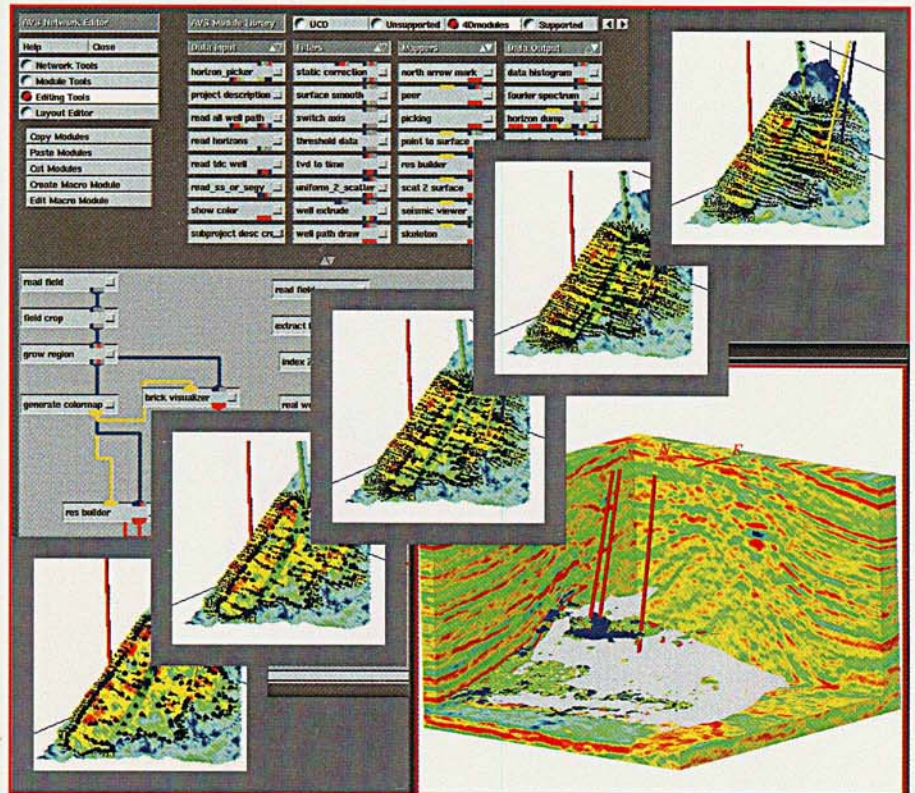
## 4-D Capabilities

The Lamont 4-D software allows you to:

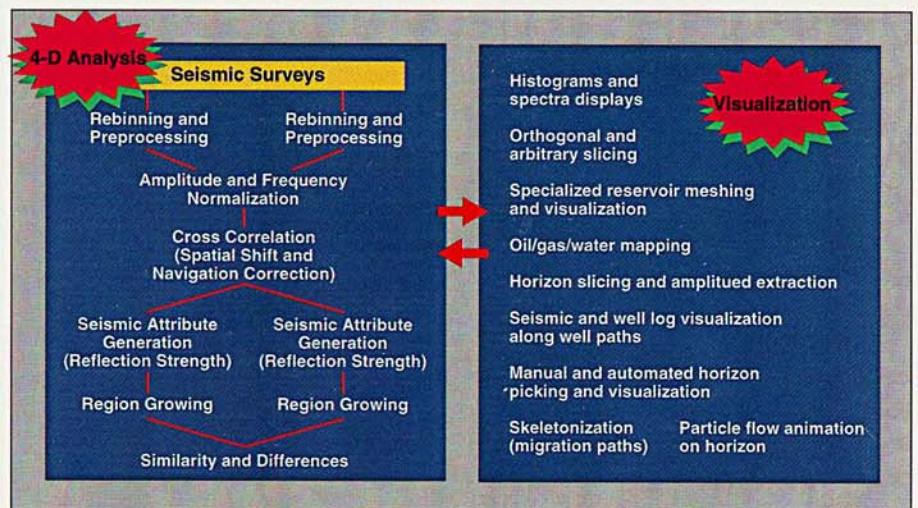
- Track fluid movement
- Calculate seismic response to fluid changes
- Enhance the determination of:
  - Porosity
  - Lithology
  - Structure
  - Fluid saturation

Identify:

- Bypassed oil and gas
- Drainage patterns by compartments (fault blocks, etc.)
- Hydrocarbon volumes in place
- Potential new well locations



The series of reservoir models depict oil drainage into a simulated horizontal well over time. The Lamont 4-D software significantly reduces analysis time—An average reservoir study can be completed in only three days, allowing for the timely use of 4-D seismic data in production management.



Processing flow of 4-D rapid analysis

## Key Features

### Rapid Analysis Product

<i>Feature</i>	<i>Benefit</i>
Survey rebinning	Quickly merges multiple surveys into the same grid volume
Spectral matching	Normalizes surveys by extracting seismic signals for comparison
Region growing	Intelligently selects and isolates oil and gas reservoir changes with time in a statistically meaningful manner
AVS™ graphics system	Enhanced 4-D capability through the use of a state-of-the-art visualization language

### Inversion Product

Survey rebinning	Quickly merges multiple surveys into the same grid volume
Enhanced normalization	Models the differences to further refine the seismic signal similarities in multiple surveys
Enhanced region growing	Adds quantitative measurement to reservoir properties
Export of reservoir properties	Enhances predictive simulation capability to reservoir simulator
Quantitative interpretation of fluid changes over time	Allows volume calculations and aids decision making
Consistent inversion of multiple surveys	Increased accuracy of calculations
Integrated applications	Use as a stand-alone package or with the Rapid Analysis product. Can also be linked to proprietary products and techniques.

AVS is a trademark of the Advanced Visual Systems Corporation.



Western Geophysical

**Houston** 10001 Richmond Avenue • Houston, Texas 77042-4299  
Tel 713-789-9600 • Fax 713-789-0172 • Telex 6734119 WGEO HOU  
**London** 455 London Road • Isleworth, Middlesex TW7 5AB England  
Tel 44-181-560-3160 • Fax 44-181-847-3131 • Telex 24970 WESGECO G  
**Perth** 2nd Level, Sheraton Court • 207 Adelaide Terrace • East Perth 6004  
Western Australia • Tel 61-9-268-2682 • Fax 61-9-268-2600  
E-mail wg.software@waii.com

## 4-D Technology, Inc.

9550 Forest Lane, Suite 530  
Dallas, Texas 75243  
Tel 214-342-5335  
Fax 214-342-5337  
E-mail rneal@gte.net